

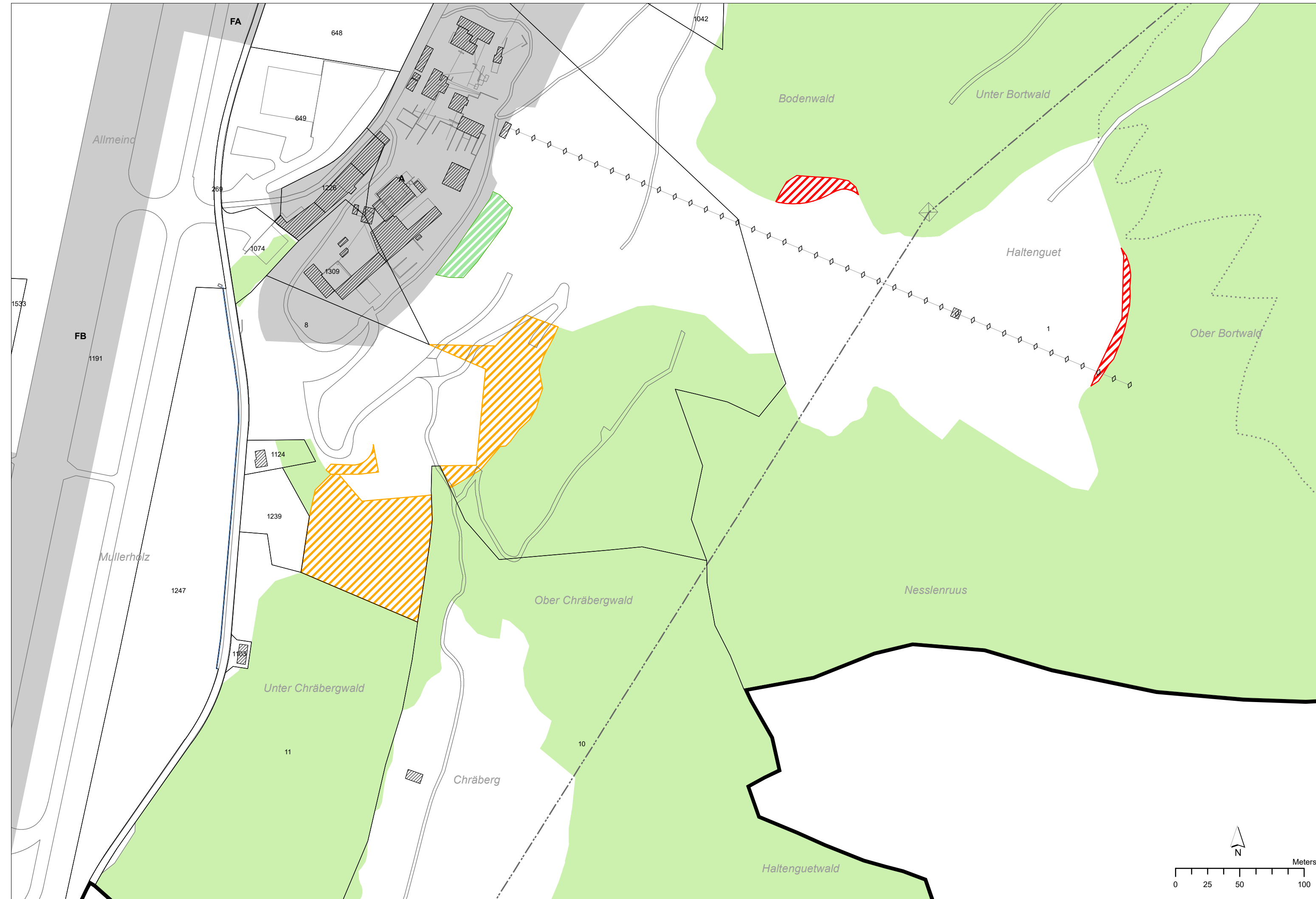


Gemeinde Glarus Nord

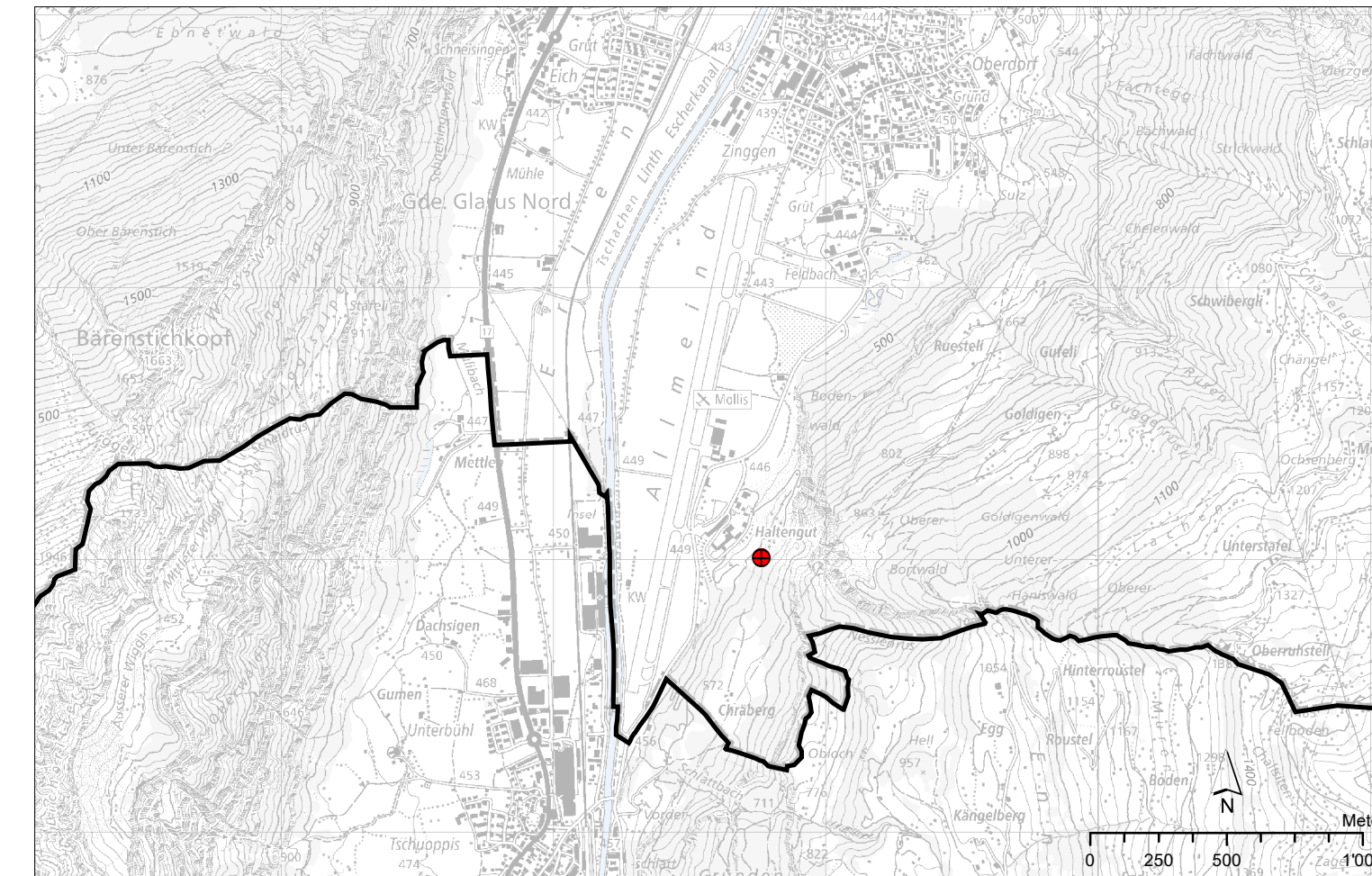
Revision Ortsplanung
Öffentliche Auflage

Rodungsplan 1: 2'500
Übersichtsplan 1: 25'000
Haltengut / Krähberg






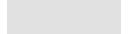


Rodungsplan 1:2'500



Übersichtsplan 1:25'000



Legende

-  Rodungsfläche 2 723 763 / 1 215 009
- Rodung:
 -  Rodung permanent 1'454 m²
 -  Rodung temporär 12' 953 m²
 -  Ersatzaufforstungsfläche 1'454 m²
- Hinweise
 -  Wald
 -  Baugebiet
 -  Gewässer
 -  Gemeindegrenze